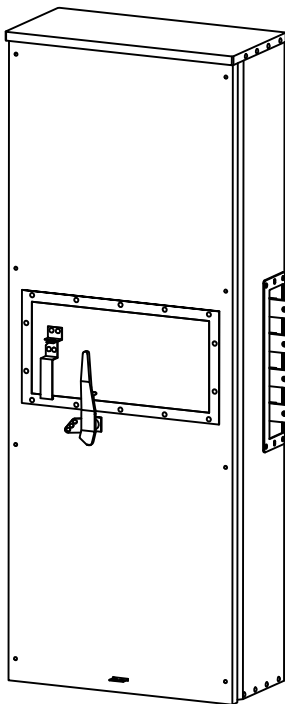


FUSIBLE MAIN SWITCH
(CLASS T FUSIBLE)
FOR
ERICKSON ELECTRICAL EQUIPMENT CO.
COMMERCIAL METERING PANELBOARDS
FOR 3Ø-4W SYSTEMS, 208Y/120V. OR 240/120V. DELTA
(MAIN LUGS LOCATED AT TOP)



FEATURES:

- TYPE 3R ENCLOSURES FOR OUTDOOR, OR INDOOR INSTALLATIONS.
- SHORT CIRCUIT CURRENT RATINGS OF 200,000 RMS SYMMETRICAL AMPERES @ 240V, BUT NOT MORE THAN WITHSTAND RATINGS OF BRANCH OVERCURRENT DEVICES.
- ALUMINUM ENCLOSURES INSTALL EASILY, NEVER RUST.
- MAIN LUGS ARE SUITABLE FOR COPPER OR ALUMINUM CONDUCTORS.
- LISTED BY UNDERWRITERS LABORATORIES INC, AS SWITCHES, MISCELLANEOUS, FILE E-52975.



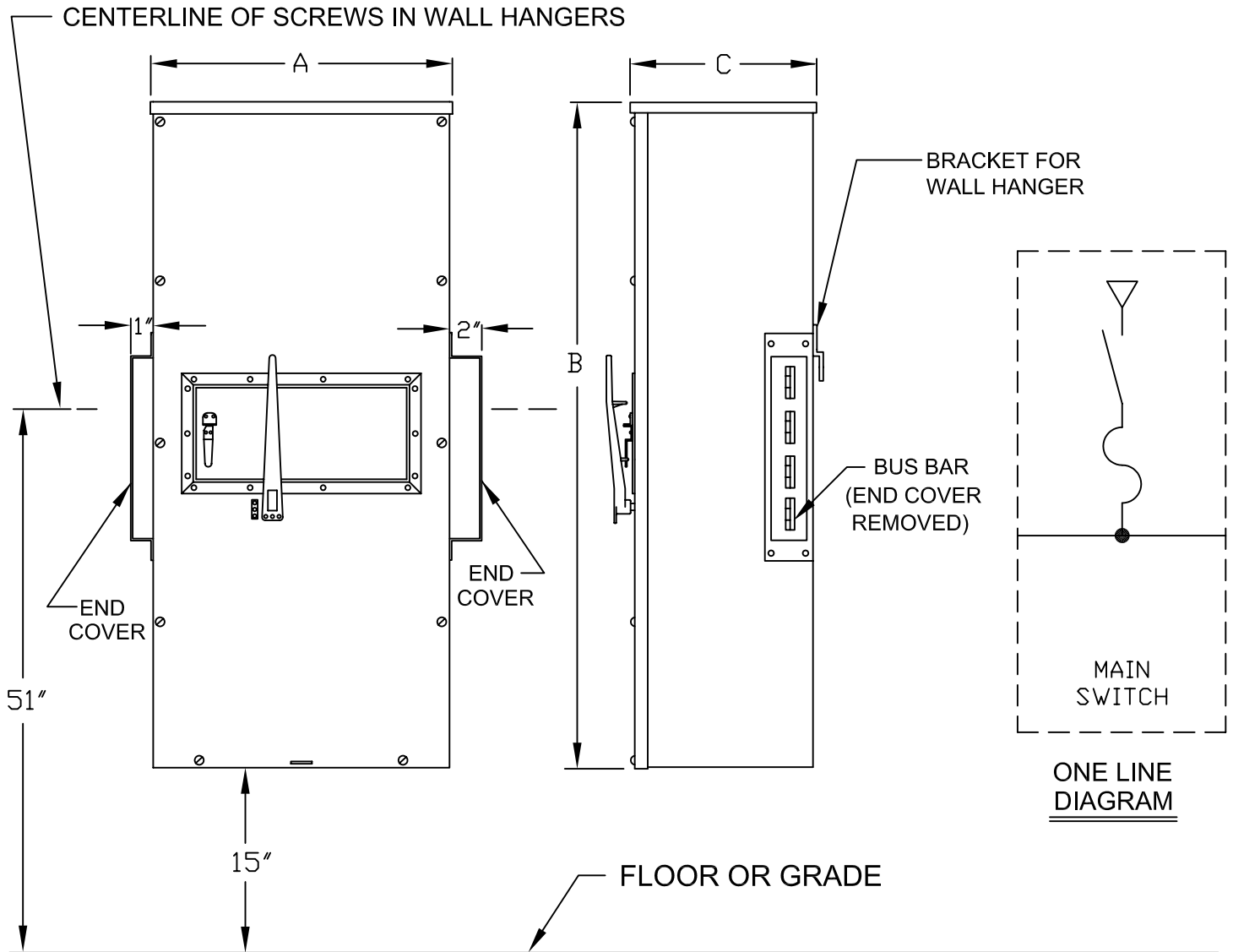
APPLICATION: FOR USE WITH ERICKSON TYPE 'CM' COMMERCIAL METERING PANELBOARDS AND OTHER METERING EQUIPMENTS WHERE MAIN FUSIBLE SWITCHES ARE INDICATED OR DESIRED.

RATINGS: 400, 600, 800 & 1200 AMPS. SIZES AVAILABLE.

www.ericksonelectric.com

ERICKSON ELECTRICAL EQUIPMENT CO.
475 BONNIE LANE • ELK GROVE VILLAGE, IL 60007
TELEPHONE: (847) 640-7701 / 1-800-952-7225
FAX: (847) 640-0565

FUSIBLE MAIN SWITCHES



CAT #	AMPS	DIM. A	DIM. B	DIM. C	LUGS (NO. WIRES/LEG & SIZE)
TMS425N	400	24 3/8"	64"	10 13/16"	(1) 600MCM OR (2) 250MCM-#1/0
TMS426N	600	24 3/8"	64"	10 13/16"	(2) 350MCM-#4
TMS427N	800	28 1/2"	64"	13 7/8"	(2) 600MCM OR (4) 250MCM-#1/0
TMS428N	1200	28 1/2"	64"	13 7/8"	(3) 600MCM OR (6) 250MCM-#1/0

- * SWITCHES ACCEPT 240V. CLASS T FUSES.
- * END COVERS ARE REMOVABLE. COVER THAT IS REMOVED WHEN CONNECTING TERMINATION BOX TO METER PANEL IS TO BE INSTALLED ON END METER PANEL UNIT.
- * ENCLOSURES ARE TYPE 3R, FOR OUTDOOR OR INDOOR USE.